

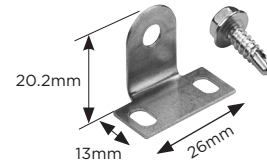
SPACELINE ACCESSORIES

MOUNTING BRACKETS AND CLIPS



SPACELINE 22 / SPACELINE 30 ADJUSTABLE MOUNTING

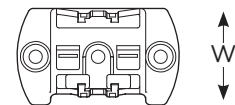
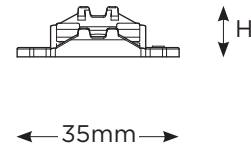
- Adjustable mounting bracket for SpaceLine 22 and SpaceLine 30 only
- Comes with locking screw (hexagon screw ST4.8 x 16 including locking washer)
- Angle marking for precise alignment
- Metric M4 screws or ST4.2 self-tapping screws are needed for fixing the mounting bracket (not included)
- Made from steel 1.4301 (frosted grey)



| ORDERING CODE | DIMENSIONS mm | WEIGHT kg |
|---------------|---------------------|-----------|
| TA24166024 | 26L x 15.5W x 20.2H | 0.07 |

SPACELINE 201 / SPACELINE 22 FIXED MOUNTING CLIPS

- Mounting plates for SpaceLine 201 and SpaceLine 22 profiles only
- 0° flat plate has stud to prevent sliding in the longitudinal direction
- Material: PBT
- Colour: white
- Metric M2.5 screws or self-tapping screws with a diameter of 2.2mm to 2.9mm and a screw head height of no more than 2.2mm are recommended for mounting these fixing plates*.



0° Fixed Bracket



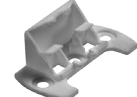
15° Fixed Bracket



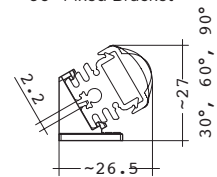
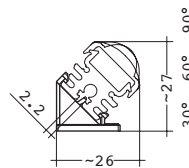
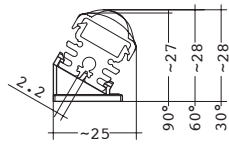
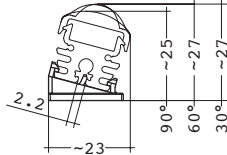
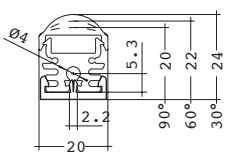
30° Fixed Bracket



45° Fixed Bracket



60° Fixed Bracket



| ORDERING CODE | DESCRIPTION | DIMENSIONS mm | WEIGHT kg |
|---------------|--|---------------------|-----------|
| TA88166859 | SPACELINE 201/22 FIXING PLATE 0° WITH STUD | 35L x 18.7W x 6.5H | 0.002 |
| TA88167372 | SPACELINE 201/22 FIXING PLATE 15° | 35L x 20.8W x 10.8H | 0.002 |
| TA88167373 | SPACELINE 201/22 FIXING PLATE 30° | 35L x 20.8W x 14.8H | 0.002 |
| TA88167374 | SPACELINE 201/22 FIXING PLATE 45° | 35L x 19.5W x 18.1H | 0.002 |
| TA88167375 | SPACELINE 201/22 FIXING PLATE 60° | 35L x 17.9W x 20.1H | 0.002 |

*Fixing plates must not be subjected to any further mechanical stresses. If this cannot be guaranteed (because of vibrations for example) it may become detached and must therefore be secured with additional fastenings.