

SPACELINE 22

ELEGANT HIGH POWER LINEAR LED

9W

24W

DESCRIPTION

The SpaceLine 22 is a compact and elegant linear LED luminaire range designed for high power lighting applications.

Available in single colour, warm/cool white, or RGB colour-changing, the SpaceLine 22 range is perfect for architectural features, cove lighting, under-shelf lighting and much more.

FEATURES

5-year Electrical System Warranty

Excellent colour consistency MacAdams SDCM ≤ 3

Long life 50,000 hours (L70)

Low voltage 24VDC constant voltage

Various beam angles* available using lens covers 30°/60°/90°/120° or plain clear, frosted, or white

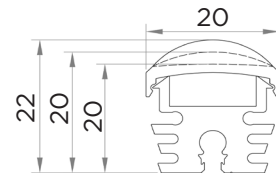
IP Rating IP20

Max. length 2m standard (other lengths available on request)

Extrusion Anodised aluminium

Mounting Brackets for easy installation. Available in both adjustable and clip-in fixed angles (0° flat, 15°, 30°, 45°, 60°) to facilitate the mounting of the luminaire in any working position

Dimmable via Space Cannon's control series or compatible third-party drivers



ORDERING CODE ¹	DESCRIPTION	POWER WATTAGE	LUMEN OUTPUT	CRI
240100-XX-YY	SPACELINE 22 LINEAR LED 700 GOLD 2700K 1000mm	14.4W/m	600	>90
240102-XX-YY	SPACELINE 22 LINEAR LED 700 WARM WHITE 3000K 1000mm	8.6W/m	680	>80
240103-XX-YY	SPACELINE 22 LINEAR LED 700 COOL WHITE 4000K 1000mm	8.6W/m	720	>80
240104-XX-YY	SPACELINE 22 LINEAR LED 700 DAYLIGHT WHITE 6500K 1000mm	8.6W/m	705	>80
240105-XX-YY	SPACELINE 22 LINEAR LED 1500 WARM WHITE 3000K 1000mm	24W/m	1450	>80
240106-XX-YY	SPACELINE 22 LINEAR LED 1500 COOL WHITE 4000K 1000mm	24W/m	1570	>80
240107-XX-YY	SPACELINE 22 LINEAR LED RGB 500 COLOUR-CHANGING 1000mm	14.4W/m	-	-
240108-XX-YY	SPACELINE 22 LINEAR LED RGB 900 COLOUR-CHANGING 1000mm	18W/m	-	-
240109-XX-YY	SPACELINE 22 LINEAR LED 2500 WARM WHITE 2700K 1000mm	23W/m	2500	>90
240110-XX-YY	SPACELINE 22 LINEAR LED 2500 WARM WHITE 3000K 1000mm	23W/m	2500	>90
240111-XX-YY	SPACELINE 22 LINEAR LED 2500 NEUTRAL WHITE 4000K 1000mm	23W/m	2500	>90
240112-XX-YY	SPACELINE 22 LINEAR LED 2500 DAYLIGHT WHITE 6500K 1000mm	23W/m	2500	>90



Adjustable Bracket



0° Fixed Bracket



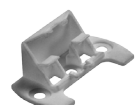
15° Fixed Bracket



30° Fixed Bracket



45° Fixed Bracket



60° Fixed Bracket

¹ Ordering codes:

XX = Beam Angle (0 = 0°, 30 = 30°, 60 = 60°, 90 = 90°, 120 = 120°)

YY = Cover (CL = Clear, FR = Frosted, WH = White)

Specifications subject to change without notice. Updated Sept 2017.