

# SPACELINE 201

## ELEGANT LINEAR LED

9W

15W

### DESCRIPTION

The SpaceLine 201 is a compact and elegant linear LED luminaire range designed for low to medium power lighting applications.

Available in single colour, warm/cool white, or RGB colour-changing, the SpaceLine 201 range is perfect for architectural features, cove lighting, under-shelf lighting and much more.

### FEATURES

**5-year** Electrical System Warranty

**Excellent colour consistency** MacAdams SDCM  $\leq 3$

**Long life** 50,000 hours (L70)

**Low voltage** 24VDC constant voltage

**Various beam angles\*** available using lens covers 30°/60°/90°/120° or plain clear, frosted, or white

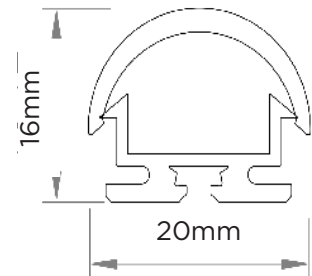
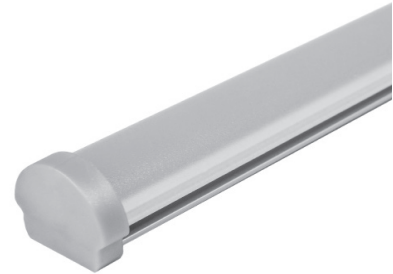
**IP Rating** IP20

**Max. length** 2m standard (other lengths available on request)

**Extrusion** Anodised aluminium

**Mounting Brackets** for easy installation. Available in clip-in fixed angles (0° flat, 15°, 30°, 45°, 60°)

**Dimmable** via Space Cannon's control series or compatible third-party drivers



ORDERING CODE <sup>1</sup>	DESCRIPTION	POWER WATTAGE	LUMEN OUTPUT	CRI
240000-XX-YY	SPACELINE 201 LINEAR LED 700 GOLD 2700K 1000mm	14.4W/m	600	>90
240002-XX-YY	SPACELINE 201 LINEAR LED 700 WARM WHITE 3000K 1000mm	8.6W/m	680	>80
240003-XX-YY	SPACELINE 201 LINEAR LED 700 COOL WHITE 4000K 1000mm	8.6W/m	720	>80
240004-XX-YY	SPACELINE 201 LINEAR LED 700 DAYLIGHT WHITE 6500K 1000mm	8.6W/m	705	>80
240007-XX-YY	SPACELINE 201 LINEAR LED RGB 500 COLOUR-CHANGING 1000mm	14.4W/m	-	-



0° Fixed Bracket



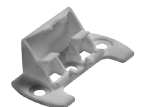
15° Fixed Bracket



30° Fixed Bracket



45° Fixed Bracket



60° Fixed Bracket

<sup>1</sup> Ordering codes:

XX = Beam Angle (0 = 0°, 0 = 30°, 60 = 60°, 90 = 90°, 120 = 120°)

YY = Cover (CL = Clear, FR = Frosted, WH = White)