

# FIM II

## ULTRA HIGH-POWER LED BAR

30W — 90W

# P R E L I M I N A R Y   D A T A

### DESCRIPTION

The FIM II is an ultra high-output compact linear LED bar designed for architectural feature and general lighting applications.

Powered by the latest Lumileds LUXEON Rebel LEDs, the FIM II is available in RGB, single colour, or tunable white. It's perfect for lighting heritage buildings, architectural features, grazing walls, lighting passages, stairways, windows, and much more.

Fully dimmable with integral DMX and RDM for remote address-setting and diagnostics, the FIM II is the perfect choice for special effect feature lighting.

### FEATURES

**Collimators** High precision optics available in narrow, medium, wide, and elliptical angles to suit every application.

**Lens** Transparent, weatherproof, and shock-resistant.

**Housing** Anodised aluminium, custom colours available\*.

**Cable** Combined UV-stabilised outdoor power/data cable with custom 7-pin in/out connectors for easy installation. Simply daisy-chain together.

**Adjustable Bracket** Allows the mounting of the luminaire in any working position.



\*455mm model shown



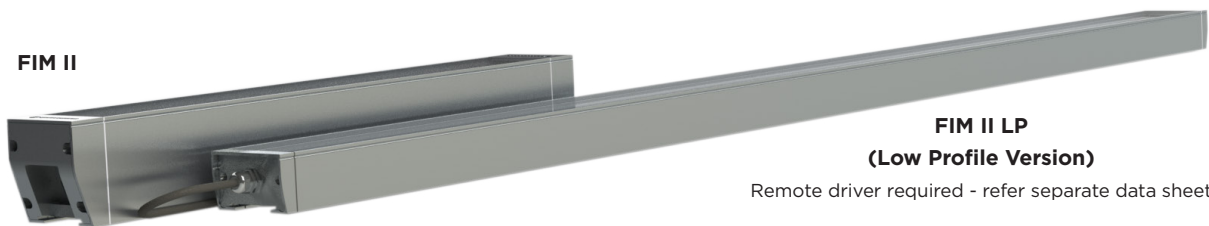
LED  
COLOURS  
AVAILABLE



RGBW  
COLOUR  
MIXING

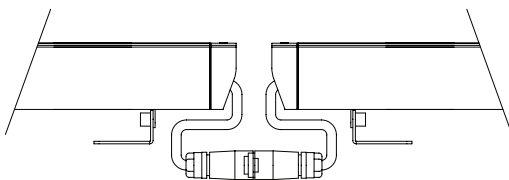
IP  
66

FIM II



FIM II LP  
(Low Profile Version)

Remote driver required - refer separate data sheet



### Easy Installation

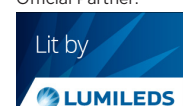
Combined 240V & DMX data cable for quick and easy daisy-chained installation. Perfect for heritage buildings where multiple penetrations are not allowed.

### Custom Extension Cables

Allowing completely custom installations that negate the need for on-site terminations and unsightly junction boxes (FIM II only)



Official Partner:



www.spacecannon.com.au  
sales@spacecannon.com.au  
(61 3) 9486 5366

Made in Australia

# FIM II

## ULTRA HIGH-POWER LED BAR

30W — 90W

# PRELIMINARY DATA

### SPECIFICATIONS

#### Housing

Aluminium  
– anodised or powder-coated

#### Ingress Protection

IP66

#### Control

DMX512, RDM\*  
(Remote Device Management)  
Onboard thermal management with RDM monitoring and current (brightness) reduction in the event of overheating.

\*DMX start address and diagnostics requires a compatible RDM Tool and software.

#### LEDs

Lumileds Rebel LEDs  
FIM 600: 18 LEDs x 1.2W  
FIM 900: 27 LEDs x 1.2W  
FIM 1200: 36 LEDs x 1.2W

#### LED Optics

Specify at time of order:  
6°, 20°, 30°, 45°, 9 x 45°  
Also available with no optics or custom beam angles – contact Space Cannon.

#### LED Colours

RGB (3000K or 4000K)  
Single colour:  
Red, Green, Blue, Amber, Cool White, Warm White.  
Also available in tunable white.

#### Power

90-250VAC 50/60Hz single phase with over-voltage, overload, and short-circuit protection  
FIM 600: 22W  
FIM 900: 33W  
FIM 1200: 44W

#### Accessories

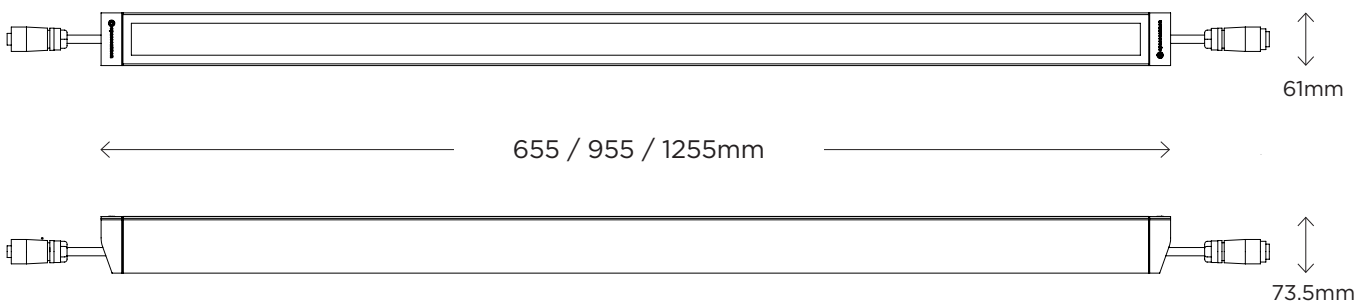
Standard mounting bracket

#### Accessories not included

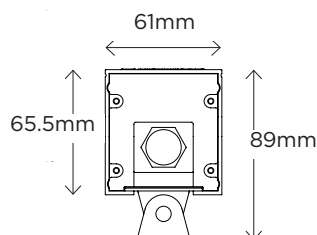
DMX controller  
Wall-mount bracket

Specifications subject to change without notice. Updated Nov 2017.

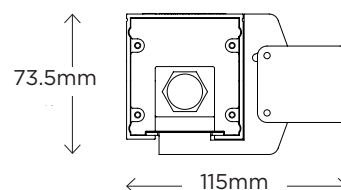
### DIMENSIONS



#### Standard Mounting Bracket



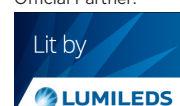
#### Wall-Mount Bracket



www.spacecannon.com.au  
sales@spacecannon.com.au  
(61 3) 9486 5366

Made in Australia

Official Partner:

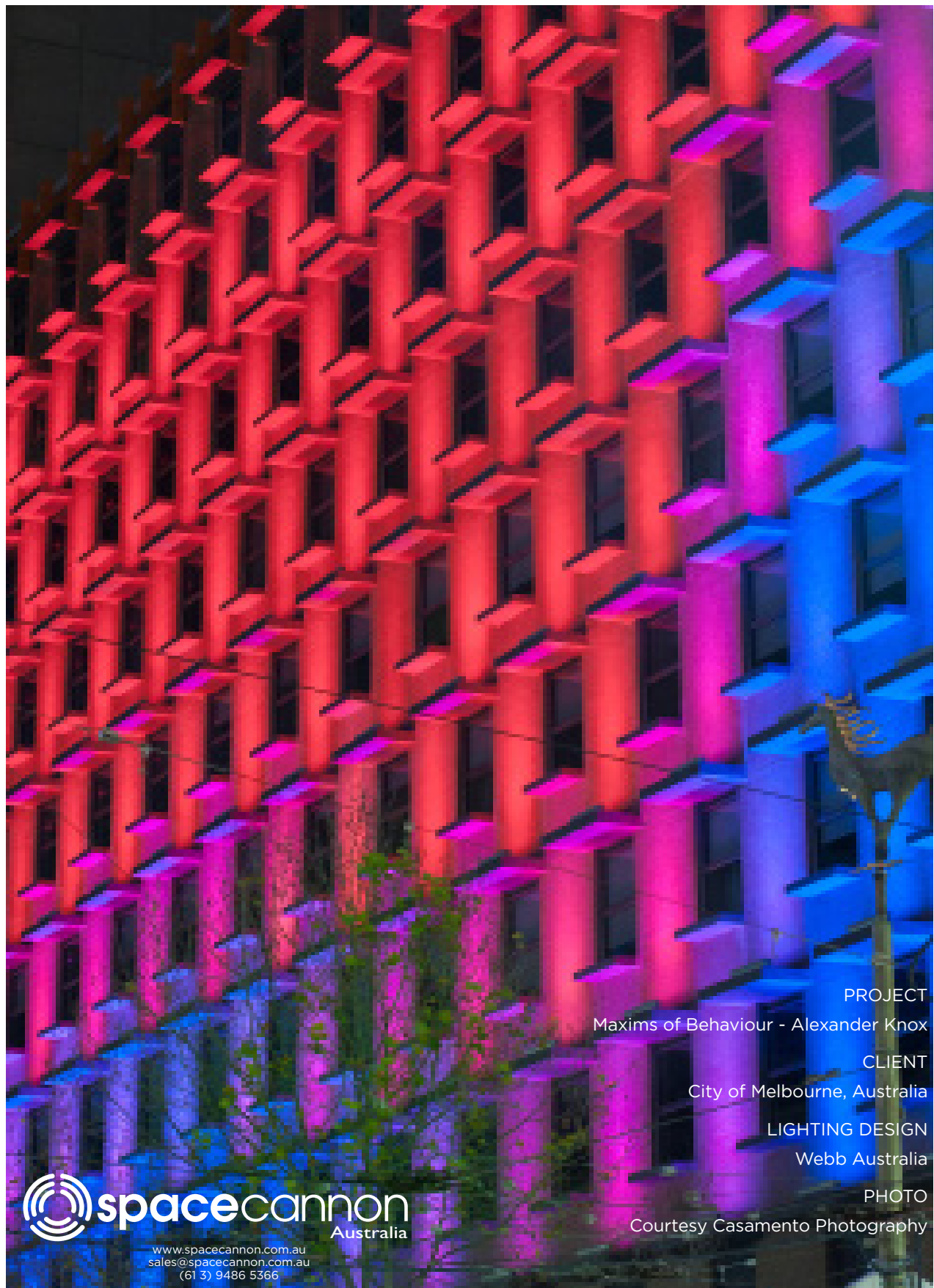


# FIM II

ULTRA HIGH-POWER LED BAR

30W

90W



PROJECT

Maxims of Behaviour - Alexander Knox

CLIENT

City of Melbourne, Australia

LIGHTING DESIGN

Webb Australia

PHOTO

Courtesy Casamento Photography



[www.spacecannon.com.au](http://www.spacecannon.com.au)  
[sales@spacecannon.com.au](mailto:sales@spacecannon.com.au)  
(61 3) 9486 5366